

## QUALITY

Winnebago RVs are designed and built around you, with superior craftsmanship, advanced manufacturing technologies and steel-focused construction to enhance safety and reliability.

## INNOVATION

From groundbreaking RVs to game-changing features to the spacious floorplans made possible by our SmartSpace™ design, our heritage is unrivaled for continuous industry firsts in vehicle technology and design.

## SERVICE

Our carefully chosen dealers are supported by factory training and our advanced parts supply system, while owners benefit from excellent real-world customer support as well as 24/7 access to online technical information.

## BELONGING

Winnebago owners are a connected community – some of the friendliest, most knowledgeable and welcoming RVers you'll find anywhere.

**WINNEBAGO**



© 2024 Winnebago

**WINNEBAGO**

VIEW // NAVION

## Luxuriously efficient. Efficiently luxurious.

With the relaxed elegance of its contemporary design, the View & Navion's premium furnishings, carefully engineered systems and functional storage combine to create a motorhome that's as easy to live in as it is to drive.



From its rock-solid foundation to the latest innovations, the View & Navion have never looked better.



#### **Mercedes-Benz Sprinter Chassis**

The proven Sprinter chassis incorporates the latest Mercedes-Benz® safety features and, with its fuel-efficient turbo-diesel V6, provides plenty of towing power.



#### **Upscale interior**

With premium components and contemporary design cues, you'll be proud to call your View® and Navion® home everywhere you go.



#### **Extended escapes**

Stay out longer, thanks to the standard 200-watt solar panels, available dual lithium-ion batteries and 2kW inverter, and some of the largest holding tanks in its class.



#### **SuperShell™ Sleeper Deck**

The stylish lightweight fiberglass outer shell provides enhanced thermal and acoustic insulation, keeping things quieter and more comfortable, in camp and on the road.



#### **Exterior storage**

No toy left behind: the View & Navion offer up to 43 cubic feet of exterior storage, including cross-coach storage (24D, 24J) for larger items.



## Thoughtfully designed spaces, highlighted with deluxe amenities.

### Gourmet-worthy galley

The enhanced galley features larger cabinets and drawers, more usable counter space, large 10 cu. ft. DC refrigerator/freezer, and hybrid LP/induction cooktop.

### Dining options to suit your taste

Dine and relax in comfort: the three floorplans let you choose the seating and table options that work best for your style.

### Deluxe seating options

Available theater seating with hideaway swivel tables (24D, 24J) or dual recliners with table (24V), make an ideal spot to catch a movie or the big game.

### Attractive, functional storage solutions

Lightweight and durable, the curved Tecnoform® cabinets blend perfectly with the stylish interior, while thoughtful touches like the lighted soft-close drawers abound.

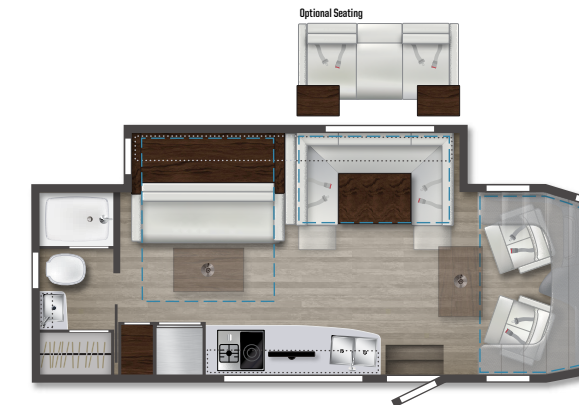
### Flexible sleep solutions

In addition to a cabover bunk, each floorplan offers a different bed configuration: Murphy+ bed (24D), rear corner bed (24J) or Flex bed twin/queen system (24V).

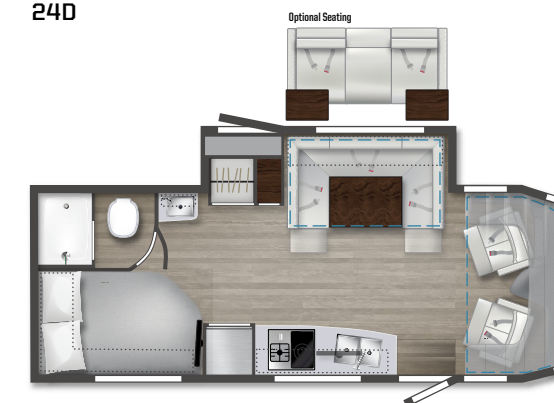
### Deluxe bath

The well-equipped bath includes a separate shower with Oxygenics® showerhead, stainless steel sink, lavatory and medicine cabinets, and gentle toe-kick lighting.

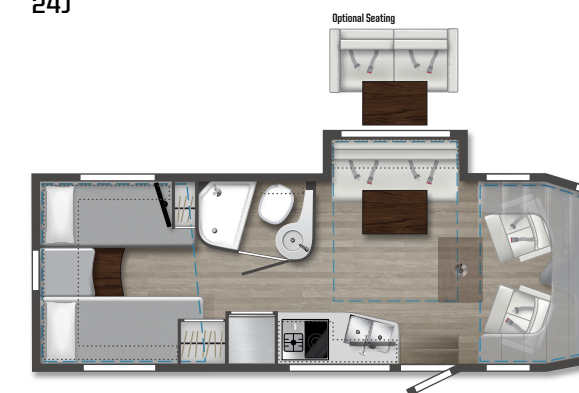
Dotted lines denote overhead storage area. Blue dashed lines denote sleeping areas. Floorplans are representations only and are subject to change. Please contact a certified Winnebago dealer for more information.



24D



24J



24V



Family getaways,  
weekends with  
friends or the trip  
of a lifetime: the  
View & Navion rise  
to every occasion.



**FROLI sleep system (24J, 24V)**

Developed in Europe, the FROLI® Sleep System relieves pressure and improves air circulation under the mattress for a better night's sleep.



**Entertainment Package**

The available entertainment system upgrade includes a Blu-Ray Disc® player and Bluetooth® soundbar for a more immersive experience.



**Enhanced entryway door**

It all starts here: the sleek entrance includes a streamlined screen door with a large window and built-in storage. And the double latching system reduces road and camp noise.



WINNEBAGO

# VIEW & NAVION / Specifications

WEIGHTS & MEASURES	24D	24J	24V
Length	25'6"	25'6"	25'6"
Exterior Height <sup>1</sup>	11'	11'	11'
Exterior Width	7'6.25"	7'6.25"	7'6.25"
Exterior Storage <sup>2</sup> (cu. ft.)	30	43	33.6
Awning Length	16'	16'	16'
Interior Height	6'8"	6'8"	6'8"
Interior Width	7'3"	7'3"	7'3"
Freshwater Tank Capacity <sup>3</sup> (gal.)	30	37	31
Water Heater Capacity (gal.)	Continuous	Continuous	Continuous
Holding Tank Capacity <sup>3</sup> - Black (gal.)	41	41	41
Holding Tank Capacity <sup>3</sup> - Gray (gal.)	41	41	41
LP Capacity <sup>4</sup> (lbs.)	50.76	50.76	50.76
Fuel Capacity (gal.)	24.5	24.5	24.5
GCWR <sup>5</sup> (lbs.)	15,250	15,250	15,250
GVWR (lbs.)	11,030	11,030	11,030
GAWR - Front (lbs.)	4,410	4,410	4,410
GAWR - Rear (lbs.)	7,720	7,720	7,720
Wheelbase	170"	170"	170"

## Chassis

Mercedes-Benz® RWD Sprinter Chassis 2.0L high-output, turbo-diesel 4-cylinder engine, 9-speed automatic transmission w/overdrive, 250-amp. alternator  
 Adaptive ESP technology  
 Hydraulic brakes w/ABS  
 LED high performance headlamps  
 Trailer hitch<sup>5</sup> 5,000-lb. drawbar/500-lb. maximum vertical tongue weight w/7-pin connector  
 Stylized aluminum wheels

Attention assist  
 Hill start assist  
 Crosswind assist  
 Rain sensor w/integrated wet wiper system  
**DISTRONIC PLUS®** (adaptive cruise control)  
 Power mirrors w/defrost and turn signals  
 Auto headlamps w/high beam assist  
 Automatic climate control  
 Power door locks w/remote  
 Power windows  
 Dash charging station w/wireless charging  
 12V/USB powerpoints  
 Dash appliqué package  
 Folding windshield and cab blinds  
 Leather-wrapped steering wheel  
 2 cab seat lounge cushions

## OPTIONAL EQUIPMENT

Hydraulic leveling jacks w/automatic controls (front and rear)

## Cab Conveniences

MBUX® touchscreen multimedia infotainment system w/navigation, satellite radio, Wi-Fi hotspot, intelligent voice control, and rear camera

Mercedes me connect vehicle app  
 Heated power control cab seats w/armrest, adjustable lumbar support, headrest, recline, slide and manual swivel  
 3-point seat belts  
 Airbags driver, passenger, side and curtain  
 Power assist steering w/tilt wheel  
 Digital rearview mirror  
 Active brake assist  
 Active lane keeping assist

## OPTIONAL EQUIPMENT

Cab seats w/ultrafabrics® UF Select covering

## Interior

32" HDTV  
 LED lights  
 Satellite system ready  
 Amplified digital HDTV antenna  
 Powered roof vent w/rain cover, electric lift, remote control, thermostat operation (front bunk)

MCD solar/blackout roller shades  
 Systems monitor panel  
 Tinted coach windows  
 Assist bar  
 Vinyl flooring throughout  
 Soft vinyl ceiling  
 Room divider curtain  
 Anything Keeper drop down storage above bed (24J, 24V)  
 110V/12V/USB charging stations  
 Roof wiring access port  
 U-Shaped dinette (24D, 24J)  
 TrueComfort+ sofa w/table (24V)

## OPTIONAL EQUIPMENT

Dual recliners w/table (24V)  
 Dual-pane acrylic windows  
 Theater seating w/swivel tables (24D, 24J)  
 Entertainment system w/Blu-ray™ disc player and Bluetooth® soundbar

## Galley

Laminate countertops  
 Microwave/convection oven w/touch control  
 2-burner induction and LP range cooktop  
 Mini blinds  
 10.0 cu. ft. (12V) 2-door compressor driven refrigerator/freezer  
 Cold water filtration system (galley)

Water-pump switch w/light  
 Pantry (24D, 24J)  
 Cabinets w/accent lighting  
 Lighted soft-close drawers  
 Integrated paper towel holder  
 Double stainless steel sink w/2 sink covers  
 Toe kick lighting

## Bath

24" x 32" shower (24D, 24J)  
 19" x 28" x 34" shower (24V)  
 Retractable, self-cleaning shower screen  
 Oxygenics® flexible showerhead  
 Shower skylight  
 Porcelain toilet w/foot pedal and sprayer (24J, 24V)  
 Composite toilet (24D)  
 Powered roof vent w/rain cover

Lavatory cabinet  
 Medicine cabinet  
 Mini blinds (24D)  
 Towel rack (24V)  
 Towel bar(s) (24J, 24V)  
 Tissue holder

Removable clothes rod  
 Robe hook(s)  
 Integrated facial tissue holder  
 Toe kick lighting

## Bedroom

Murphy+ bed w/deluxe queen mattress, Euro-suspension system, gel foam topper (24D)  
 Corner bed w/headboard, foam mattress, mattress cover and access to storage below (24J)  
 Flex Bed System twin beds/king bed w/foam mattresses (24V)

FROLI® deluxe sleeping system (24J, 24V)  
 MCD blackout roller shades  
 Wardrobe cabinet  
 Metal clothes rod  
 Room divider curtain  
 Anything Keeper drop down storage above bed (24J, 24V)  
 110V/12V/USB charging stations (24J, 24V)  
 110V/USB charging station (24D)  
 24" LED HDTV (24J, 24V)

## Exterior

Automatic entrance door step  
 LED porch light w/interior switch  
 Stepwell light w/interior switch  
 Front and rear mud flaps  
 Aluminum cab steps w/logeoed tread and loop attachment  
 Powered patio awning w/LED lights and Bluetooth® control  
 Large pass-through storage compartment (24D, 24J)  
 Ladder

## Heating & Cooling System

15,000 BTU air conditioner w/heat pump  
 20,000 BTU low-profile ducted furnace

## Electrical System

Service Center w/light, cable TV input, 30-amp. power cord, portable satellite dish hookup, QuickPort® service connection hatch

Automatic dual battery charge control  
 Exterior AC duplex  
 Exterior antenna jack  
 Generator auto transfer switch  
 Battery disconnect system (coach)  
 AC/DC load center/converter unit  
 2 deep-cycle, Group 31 RV batteries  
 3,800-watt LP generator  
 2,000-watt pure sine wave DC/AC inverter  
 (2) 100-watt solar panel/battery charger controller, junction box, and plug for additional portable solar panel

## OPTIONAL EQUIPMENT

Lithium-ion smart batteries w/Bluetooth® control

## Plumbing System

Service Center w/color-coded labels, pressurized city water hookup/tank diverter valve, drainage valves, exterior wash station w/lighted pump switch  
 Truma AquaGo® Comfort Plus Tankless water heater  
 TrueLevel™ holding tank monitoring system  
 Heated drainage system

10' sewer hose

Winterization Package water heater bypass valve and siphon tube  
 On-demand water pump  
 Lockable water tank fill  
 Sewage pump macerator (24V)  
 Permanent-mount LP tank w/gauge  
 LPG accessory connection (patio area)  
 Black holding tank flushing system

## Safety

LPG leak, smoke and carbon monoxide detectors  
 Fire extinguisher  
 Ground fault interrupter  
 Child seat tether anchor only available on the U-shaped dinette (24D, 24J)

## Warranty<sup>5</sup>

12-month/15,000-mile limited warranty<sup>6</sup>  
 36-month/36,000-mile limited warranty on structure<sup>6</sup>  
 10-year limited parts-and-labor warranty on roof skin<sup>6</sup>

## FOOTNOTES

- The height of each model is measured to the top of the tallest standard feature and is based on the curb weight of a typically equipped unit. The actual height of your vehicle may vary by several inches depending on chassis or equipment variations. Please contact your dealer for further information.
- The load capacity of your motorhome is designated by weight, not by volume, so you cannot necessarily use all available space when loading your motorhome.
- Capacities are based on measurements prior to tank installation. Slight capacity variations can result due to installation applications.
- Capacities shown are tank manufacturer's listed water capacity (W.C.). Actual filled LP capacity is 80% of listing due to overfilling prevention device on tank.
- Actual towing capacity is dependent on your particular loading and towing circumstances which includes the GVWR, GAWR, and GCWR, as well as adequate trailer brakes. Please refer to the Operator's Manual of your vehicle for further towing information.
- See separate chassis warranty.
- See your dealer for complete warranty information.

NA Not Available  
 Not all items available in combination. See dealer for details.

Because features, specifications, equipment, and options may vary from those highlighted here, the buyer is responsible for confirming with the dealer the features, specifications, equipment, and options included on their specific vehicle. In addition, Winnebago's program of continuous product improvement may result in changes to vehicle specifications, equipment, model availability, and price without notice.

Unless noted, trademarks are the property of Winnebago Industries, Inc. Mercedes-Benz® is the registered trademark of Daimler AG. FrolI® is the registered trademark of FrolI Kunststoffwerk Fromm GmbH. Blu-Ray Disc® is the registered trademark of Sony Kabushiki Kaisha. Bluetooth® is the registered trademark of Bluetooth SIG, Inc. Tecnoform® is a registered trademark of Tecnoform S.p.A. Oxygenics® is a registered trademark of ETL, LLC. Onan® is a registered trademark of Cummins Power Generators Inc. MCD is a trademark of MCD Innovations. Truma AquaGo® is a registered trademark of Truma Gerätetechnik GmbH & Co. KG.

## EXTERIORS



**Stellar**  
 Standard Graphics



**Mineral II**  
 Full-body Paint



**Bay Mist II**  
 Full-body Paint



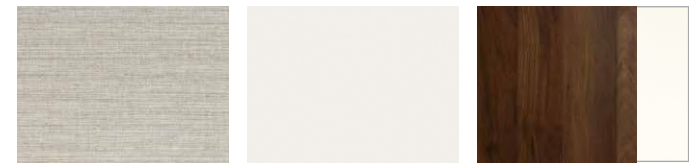
**Glacier**  
 Full-body Paint

## DECOR

### Harmony



Ultrafabrics UF Select     Bed Cover     Vinyl Flooring

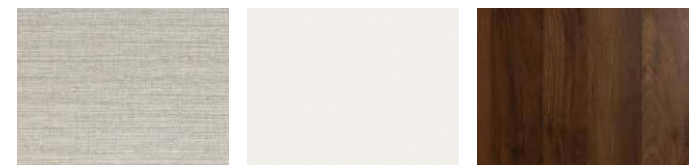


Wall Board     Countertop     Wood – Columbian Walnut with White High Gloss

### Harmonious



Ultrafabrics UF Select     Bed Cover     Vinyl Flooring



Wall Board     Countertop     Wood – Columbian Walnut



LaMesaRV.com  
 800-496-8778

## QUALITY

Winnebago RVs are designed and built around you, with superior craftsmanship, advanced manufacturing technologies and steel-focused construction to enhance safety and reliability.

## INNOVATION

From groundbreaking RVs to game-changing features to the spacious floorplans made possible by our SmartSpace™ design, our heritage is unrivaled for continuous industry firsts in vehicle technology and design.

## SERVICE

Our carefully chosen dealers are supported by factory training and our advanced parts supply system, while owners benefit from excellent real-world customer support as well as 24/7 access to online technical information.

## BELONGING

Winnebago owners are a connected community – some of the friendliest, most knowledgeable and welcoming RVers you'll find anywhere.

**WINNEBAGO**

**WINNEBAGO**



©2024 Winnebago

VIEW // NAVION

# THE ART OF TRAVEL. DOWN TO A SCIENCE.

The Winnebago® View® & Navion® are the definition of freedom, ease and versatility. From its luxurious interior to state-of-the-art technology, it redefines what it means to travel in style.



### Lithium Power – The New Standard

The View and Navion include a standard lithium power system with a 2nd alternator dedicated to fast charging of the coach battery and the option to upgrade to a larger, generator free, power system.



### Enhanced Tech & Safety Features

To enhance safety, the Sprinter chassis incorporates advanced Mercedes-Benz® technologies, such as a digital rearview mirror for a continuous view of the rear, Blind Spot Monitoring, Active Lane Keeping Assist, DISTRONIC PLUS® adaptive cruise control, and more.



### Impressive Gear Garage

Bring all you want with upgraded storage and gear-hauling capacity. Equipped with an L-track cargo tie-down system, it spans the width of the vehicle and is big enough to store 2 full-size bikes with room to spare. This heated and easy-to-clean space also features power outlets and LED lighting.



### Chassis Upgrade Anyone?

Opt for the Mercedes-Benz® all-wheel-drive Sprinter chassis and enjoy higher ground clearance to better handle adverse weather conditions and more rugged terrain.





Floorplan Shown 24T



## Upgraded Adventures.

### The Luxury of Space

Discover a modern, open space with innovative amenities like the power-reclining theater seating/Murphy+ bed combo (usable with the slide in or out) and redesigned passenger side dining area (24T), or cross-aisle bath and convertible private bedroom (24R).

### Storage Galore

In addition to the well-appointed storage cabinets in the lounge, galley and sleeping areas, the new View and Navion feature innovative storage solutions like a cross-coach residential-sized wardrobe and pullout pantry on the 24T, and convenient under bed storage in the 24R. Both floorplans also feature a full-width, heated and lighted gear garage that can hold up to 2 bikes with room to spare.

### Upscale Details

Experience upscale living with a premium WinnSleep® mattress system, power-reclining seats (24T), entertainment system, and a modern galley with eye-catching cabinet details, lighted soft-close drawers and an innovative LP/induction cooktop.

### Bathroom Amenities

The 24T's rear bathroom features a sliding door, generously-sized shower with built-in seat, and an overhead skylight, as well as a full-sized wardrobe, while the 24R features a spacious cross-aisle bath.



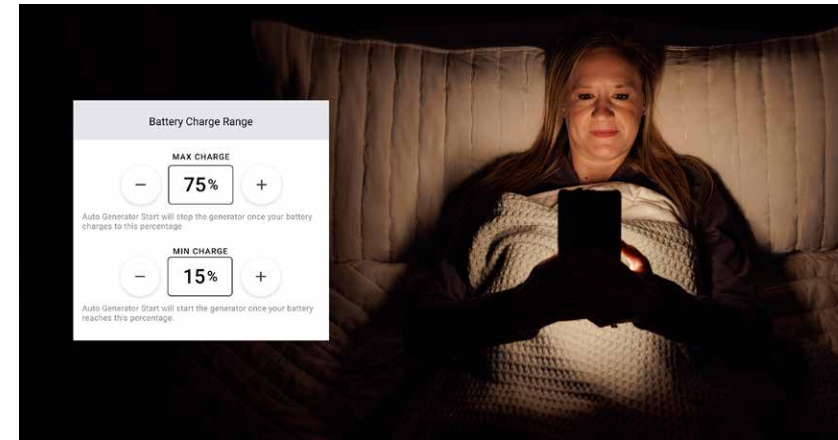
WINNEBAGOCONNECT™

# NEW TECH THAT WORKS FOR YOU.

Part co-pilot, part concierge. Winnebago Connect is a first-of-its-kind, intelligent RV platform empowered with intuitive control that proactively manages on-board systems according to your preferences.

From smart energy optimization and one-touch settings to real-time pet monitoring and over-the-air software updates, Winnebago Connect simplifies vehicle operations at every turn and notifies you as needed to deliver a more elevated experience.

**Because what's the point of next-level connectivity if it doesn't help you truly unplug?**



## Intelligent + Intuitive

Unlike other “smart” RV platforms that simply transplant controls to your mobile device, Winnebago Connect’s unrivaled technology actively monitors and intuitively controls your RV systems and features according to your preferences - silently, efficiently and automatically.



## On-the-Go Upgrades

Remote diagnostics can help speed service, while over-the-air software upgrades automatically enhance your RV systems as updates become available – without heading to the dealer. And that’s just the beginning.



## Pet Minder

Winnebago Connect keeps a close eye on all vehicle systems, so you can stay focused on the adventure. It even helps you stay aware of your four-legged friend’s climate when they’re alone in the RV and notify you as needed.



## At Your Service Anywhere

Forget something? No worries- now you can control your lights, cabin locks and other systems from anywhere.

# WELCOME TO THE WINNEBAGO LIFE

Owning a Winnebago changes everything. Sure, it starts with your RV, but it's really an interconnected experience of meeting and communicating with fellow travelers, learning about all the possibilities RV life holds, plus perks, tips and tools to make every adventure better than the last. Consider yourself invited.



Newstate Nomads / Winnebago Ambassadors



## GoLife COMMUNITY

One of the best parts of owning a Winnebago product is the community of owners. Explore upcoming owner-organized events and join GoLife Community groups to connect with Winnebago owners. Then you never have to go alone.

[LEARN MORE](#)

## GoLife PERKS

The GoLife Perks program helps you maximize your RVing experience through access to special offers and discounts that make the RV lifestyle more affordable. With offers on tires, campsites, gear and more, members can save hundreds of dollars per year, allowing you to go more for less.

[LEARN MORE](#)



## GoLife BLOG

Get the inside scoop from fellow adventurers. Hear from Winnebago owners on topics like winter camping and how to RV with kids, recommendations on destinations, routes and gear, and how-to guides like choosing tires, you're sure to find stories that will help you imagine how you'll go.

[LEARN MORE](#)

### The Winnebago App

Adding to the perks of ownership, our app gives you easy access to how-to guides and videos, owner manuals and finding service, even if you're offline. We're here for you wherever you go.

[LEARN MORE](#)

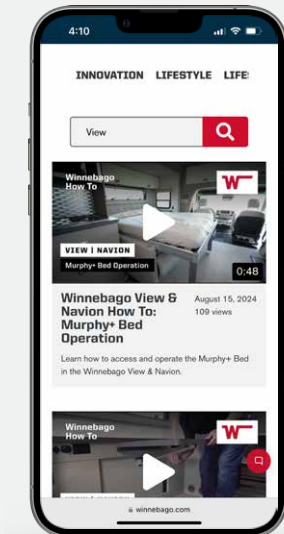


What do you need to know before you go?

And how do I level the jacks again?

You'll find the answers to these and many more questions in the View and Navion Video Library, a collection of informative and how-to videos that explains pretty much everything you need to know about the View & Navion.

From adjusting seats and flooring care and cleaning, to operating major systems, to plumbing and electrical basics — it's all here in the View & Navion Video Library.



SCAN OR  
CLICK TO  
ACCESS  
THE VIEW  
& NAVION  
VIDEO  
LIBRARY

